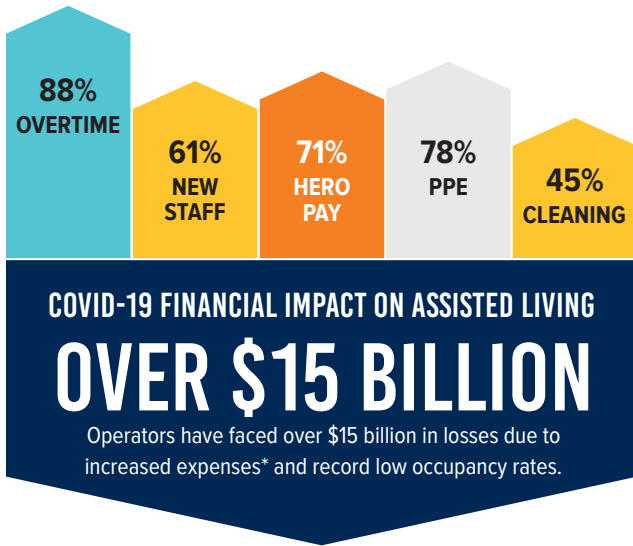


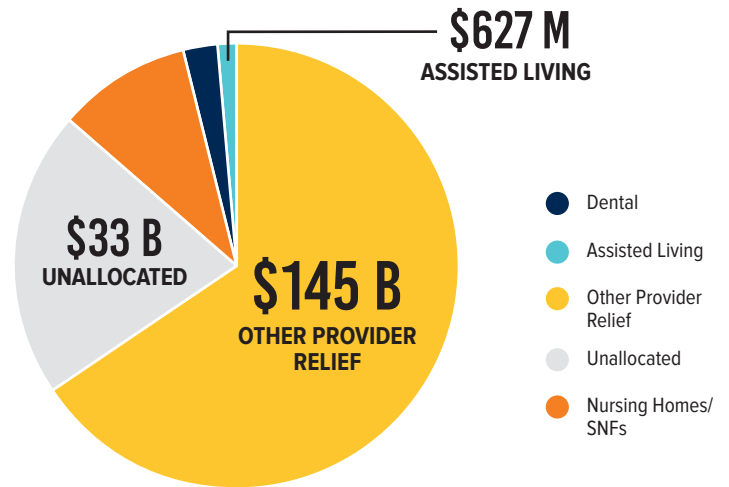
COVID-19 RELIEF LEAVES BEHINDS AMERICA'S SENIORS

AS LOSSES MOUNT AND THE POPULATION AGES, ASSISTED LIVING IS AT RISK



OVER HALF of Assisted Living Providers are operating at a loss and sustained losses could lead to closures

**Percentage of assisted living providers with increased expenses as a result of COVID-19*



PROVIDER RELIEF INEQUALITIES IN DISTRIBUTION

GAO Report - December 31, 2020

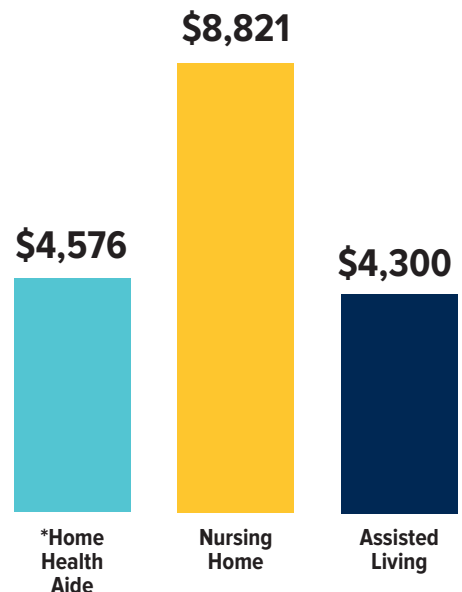


COVID TARGETS THIS POPULATION

75-84 YEARS OLD are **220X** more likely to die

85 YEARS OR OLDER are **630X** more likely to die

LONG-TERM CARE MONTHLY COSTS:



Genworth, 2020 Cost of Care Survey
**based on only 44 hours of care per week*